

Certificate of Analysis

SALSA® Binning DNA SD052 sample pictures

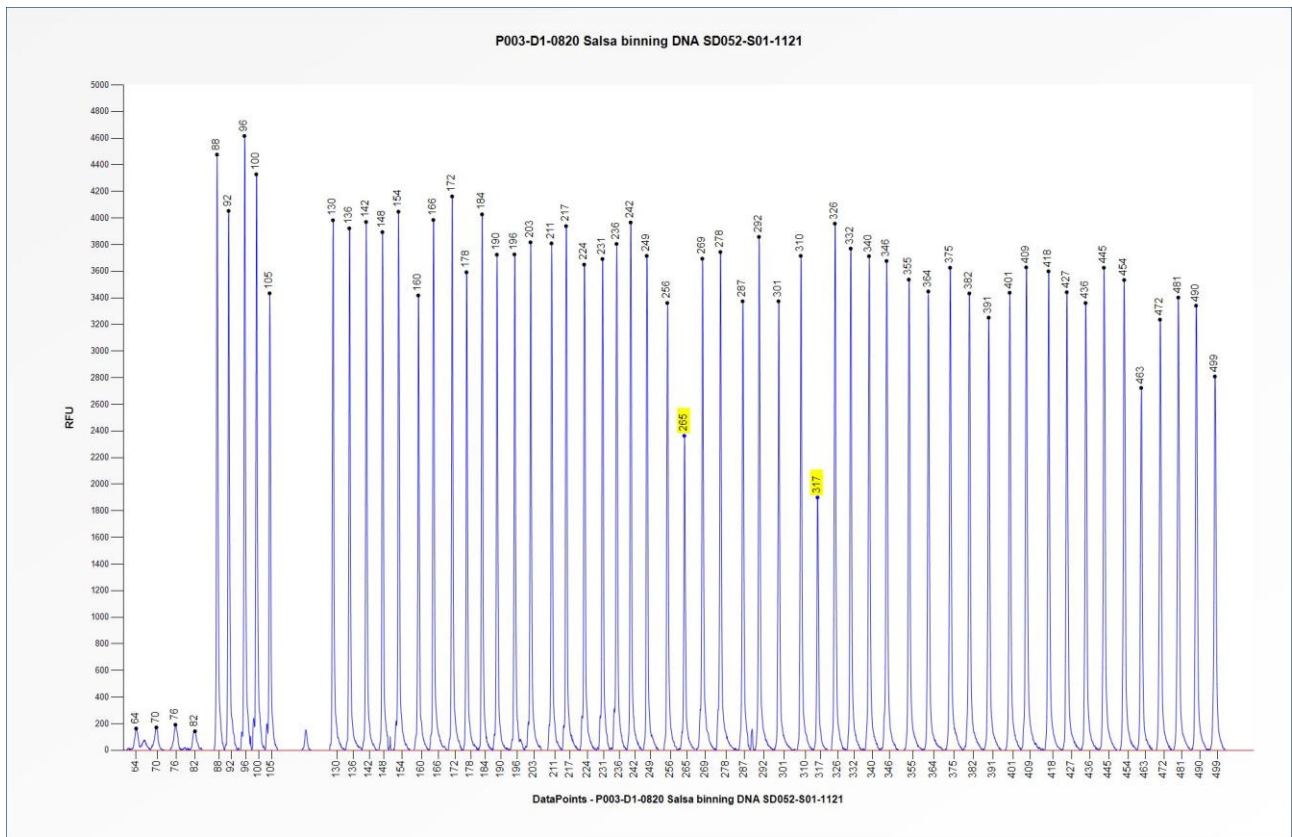


Figure 1. Capillary electrophoresis pattern from SALSA Binning DNA SD052-S01-1121 (approximately 50 ng) analysed with SALSA MLPA Probemix P003 MLH1/MSH2 (D1-0820). The location of the inversion-specific probes at 265 and 317 nt is indicated. Probe peak heights may vary between different lots of the P003-D1 probemix.

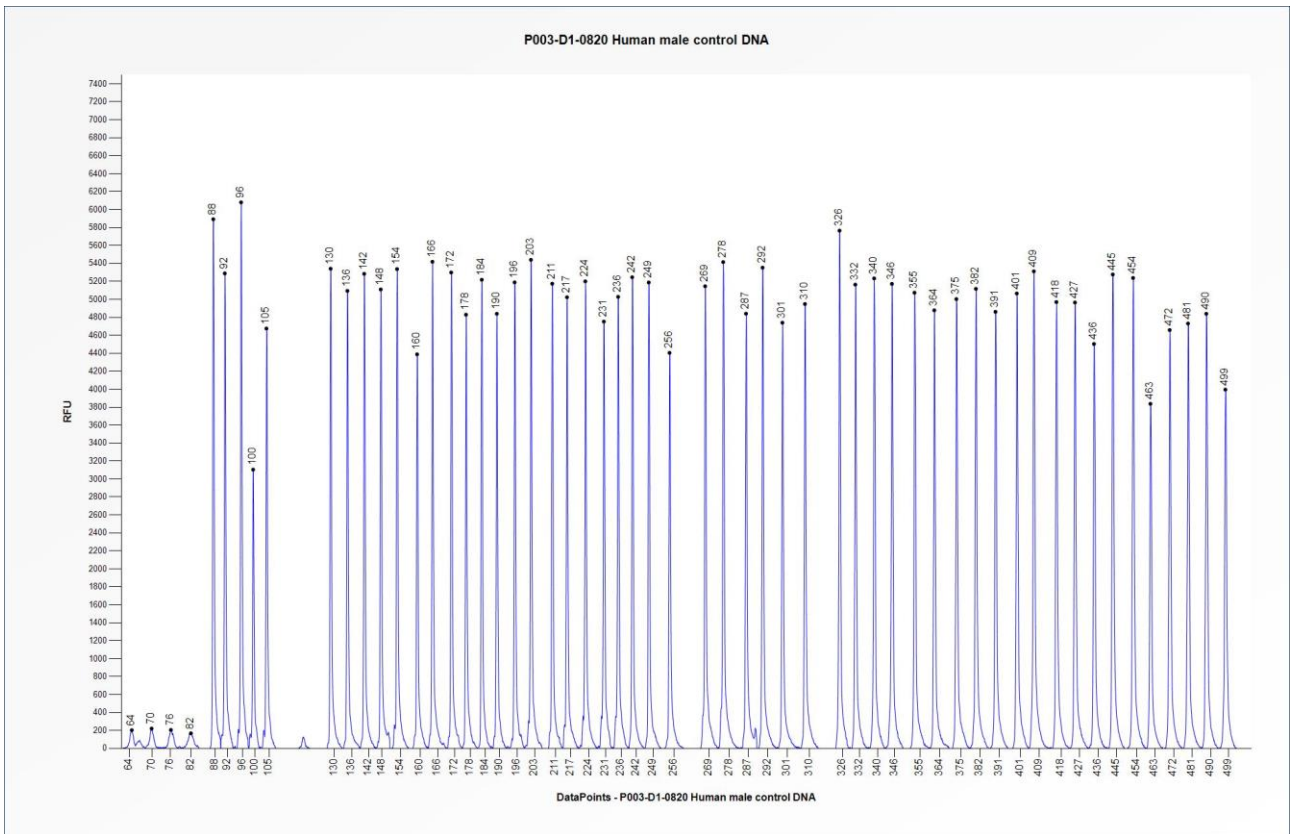


Figure 2. Capillary electrophoresis pattern from a sample of approximately 50 ng human male control DNA analysed with SALSA MLPA Probemix P003 MLH1/MSH2 (D1-0820). Probe peak heights may vary between different lots of the P003-D1 probemix.

This lot was certified by MRC Holland on 20 January 2022.

This certificate is a declaration of analysis at the time of the manufacturing process. All assays were run in compliance with manufacturer’s instructions for use.

<p>Implemented changes in the COA</p> <p>Version 01 – 27 January 2022 (05) - Not applicable, new document.</p>
--