

Certificate of Analysis

SALSA® Reference Selection DNA SD039 sample pictures

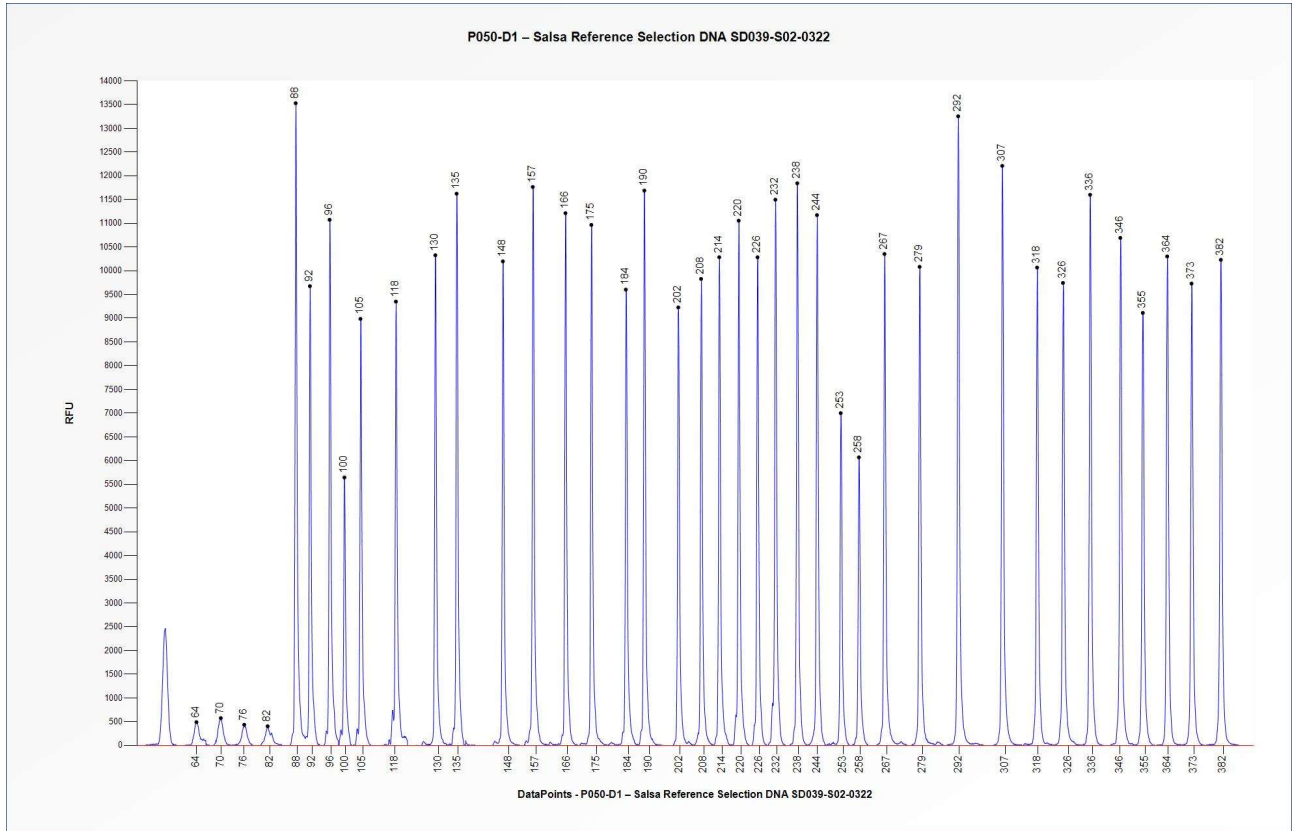


Figure 1. Capillary electrophoresis pattern from SALSA Reference Selection DNA SD039-S02-0322 (approximately 50 ng) analysed with SALSA MLPA Probemix P050 CAH (D1-0222). Probe peak heights may vary between different lots of the P050-D1 probemix.

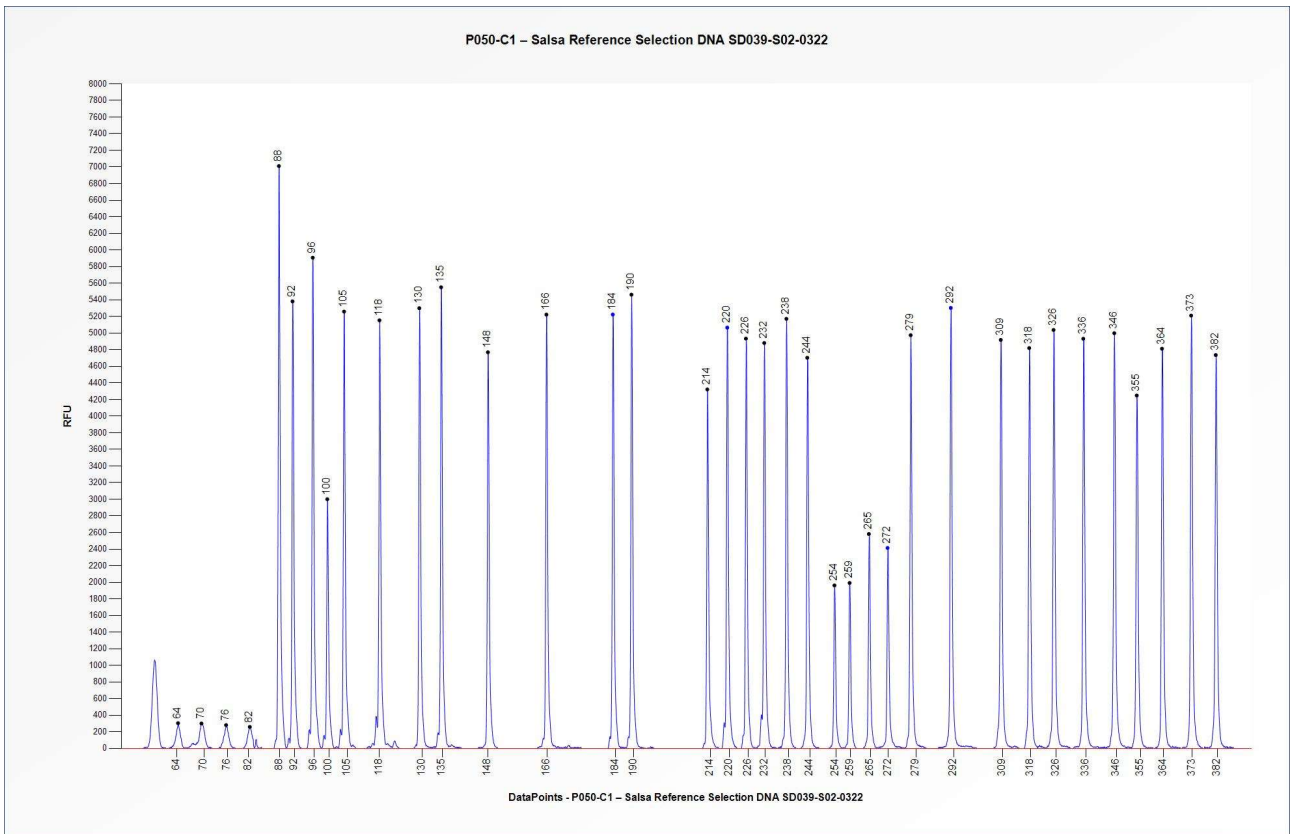


Figure 2. Capillary electrophoresis pattern from SALSA Reference Selection DNA SD039-S02-0322 (approximately 50 ng) analysed with SALSA MLPA Probemix P050 CAH (C1-0921). Probe peak heights may vary between different lots of the P050-C1 probemix.

This lot was certified by MRC Holland on 09 June 2022.

This certificate is a declaration of analysis at the time of the manufacturing process. All assays were run in compliance with manufacturer’s instructions for use.

Implemented changes in the COA
Version 01 – 16 June 2022 (04) - Not applicable, new document.