





Certificate of Analysis

SALSA® Reference Selection DNA SD082

Catalogue #	SD082	
Product name	SALSA Reference Selection DNA SD082	
	S01-1024	
	6 reactions.	
Shipping conditions	Dry ice or cooling elements.	
	Store upon arrival between -25 °C and -15 °C.	
	Expiry date: October 2029, when stored at recommended conditions.	
Purpose	To be used with SALSA MLPA Probemix P008-C1 PMS2, SALSA MLPA Probemix P021-B1 SMA, SALSA MLPA Probemix P60-B2 SMA Carrier, SALSA MLPA reagent kits and Coffalyser.Net™ analysis software as described in the MLPA General Protocol and the corresponding Reference Selection DNA product description.	
Quality control specifications	<ul style="list-style-type: none">- Reference Selection DNA SD082 has a diploid status for the following genes: <i>PMS2</i>, <i>PMS2CL</i>, <i>NAIP</i>, <i>SMN1</i> and <i>SMN2</i>, as well as for the reference probe target sequences of SALSA MLPA Probemix P008-C1 PMS2, SALSA MLPA Probemix P021-B1 SMA and SALSA MLPA Probemix P060-B2 SMA Carrier.- Signal-to-size drop or sloping in the Reference Selection DNA SD082 reactions should be similar (max 30% difference) as compared to arbitrarily chosen genomic samples known to be of sufficient quality for MLPA.- Concentration of Reference Selection DNA SD082 is between 8 and 12.5 ng/μl.	Test result
		PASS

More information: www.mrcholland.com ; www.mrcholland.eu	
	MRC Holland bv; Willem Schoutenstraat 1 1057 DL, Amsterdam, The Netherlands
E-mail	info@mrcholland.com (information & technical questions) order@mrcholland.com (orders)
Phone	+31 888 657 200

Certificate of Analysis

SALSA® Reference Selection DNA SD082 sample picture

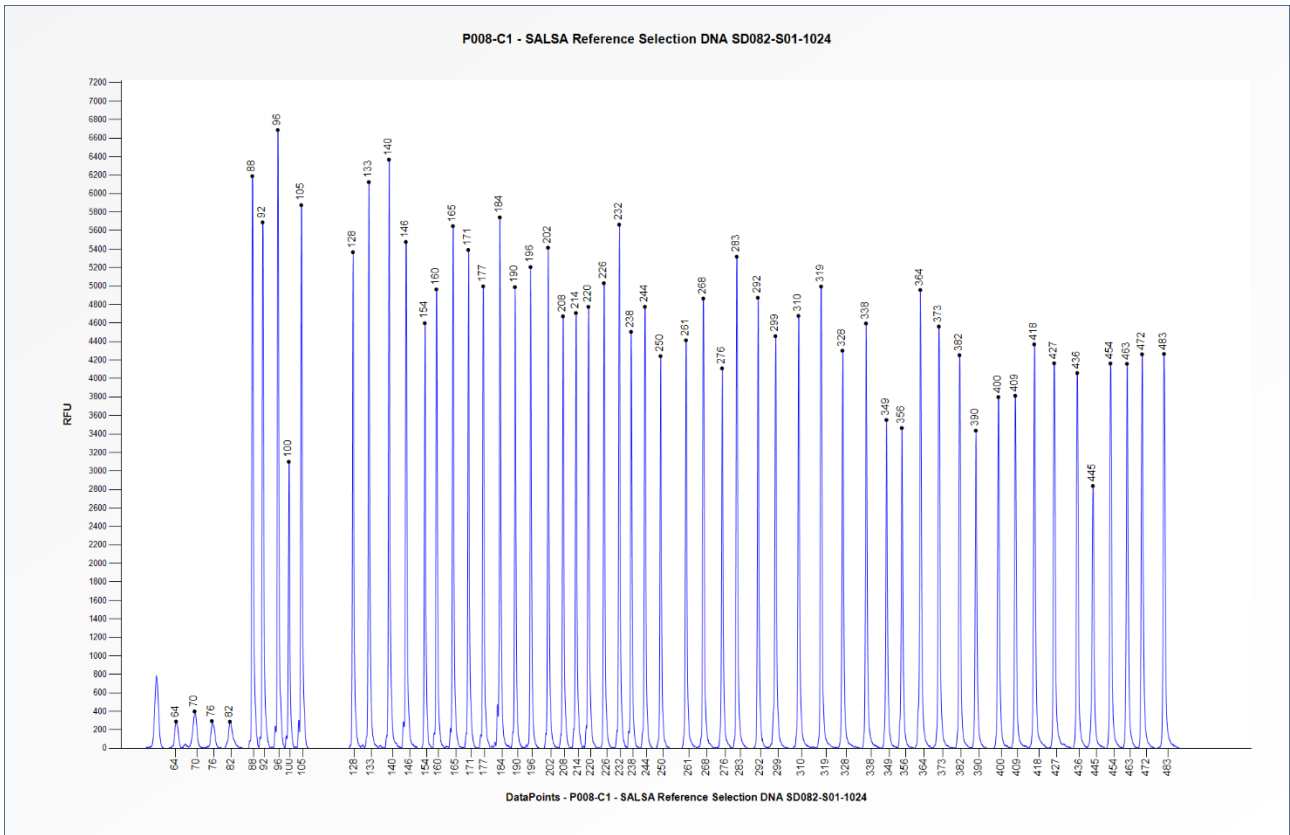


Figure 1. Capillary electrophoresis pattern from SALSA Reference Selection DNA SD082-S01-1024 (approximately 50 ng) analysed with SALSA MLPA Probemix P008-PMS2 (C1-0523). Probe peak heights may vary between different lots of the P008-C1 probemix.

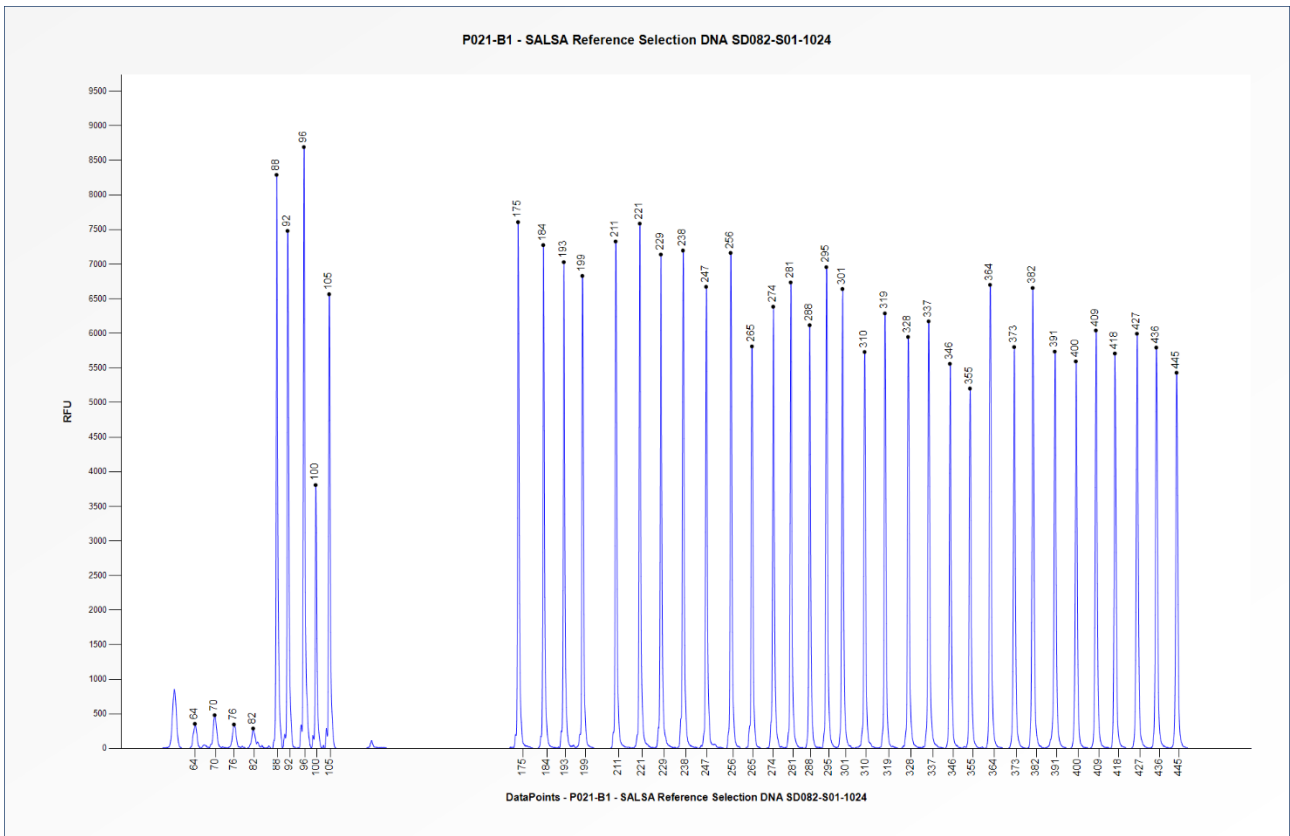


Figure 2. Capillary electrophoresis pattern from SALSA Reference Selection DNA SD082-S01-1024 (approximately 50 ng) analysed with SALSA MLPA Probemix P021 SMA (B1-1121). Probe peak heights may vary between different lots of the P021-B1 probemix.

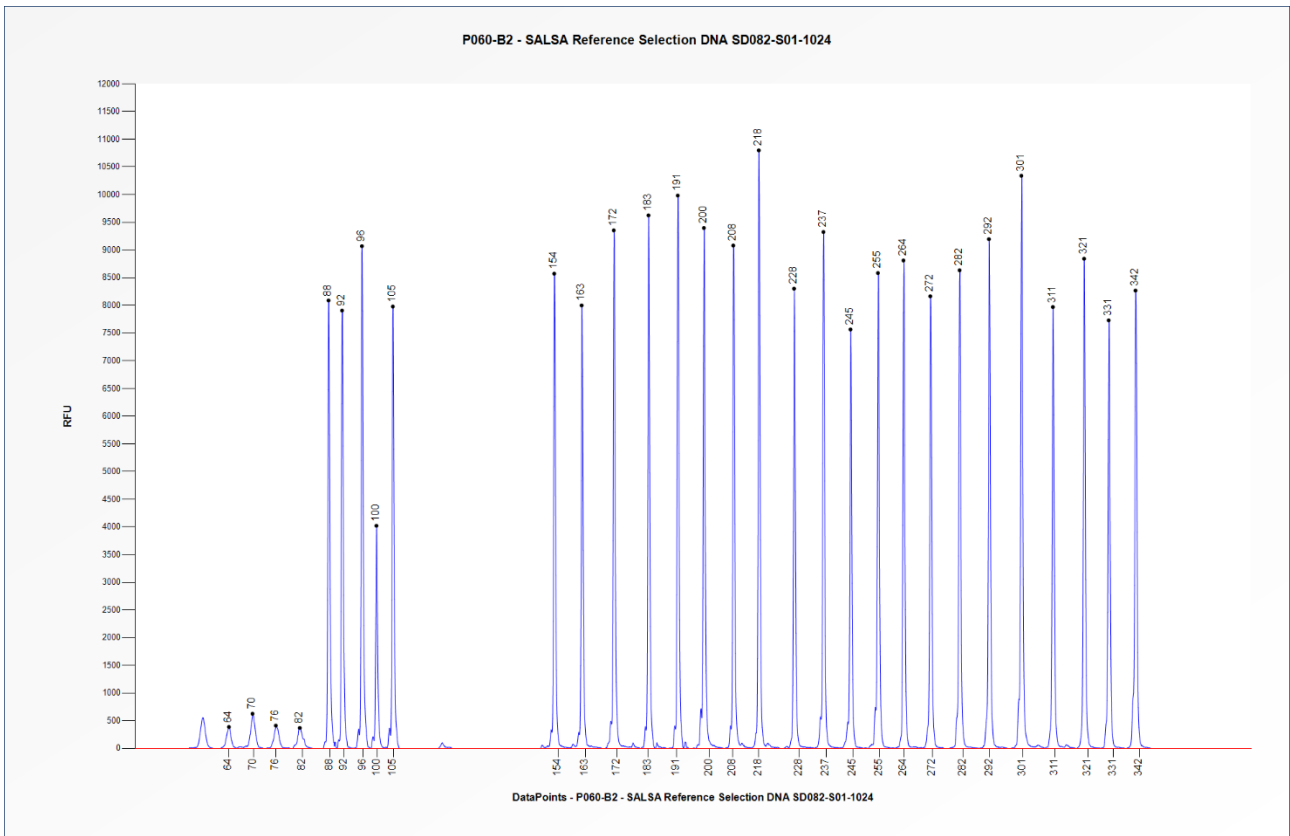


Figure 3. Capillary electrophoresis pattern from SALSA Reference Selection DNA SD082-S01-1024 (approximately 50 ng) analysed with SALSA MLPA Probemix P060 SMA Carrier (B2-1122). Probe peak heights may vary between different lots of the P06-B2 probemix.

This lot was certified by MRC Holland on 24 October 2024.

This certificate is a declaration of analysis at the time of the manufacturing process. All assays were run in compliance with manufacturer’s instructions for use.

Implemented changes in the COA
Version 01 – 30 October 2024 (04) - Not applicable, new document.