

Certificate of Analysis

SALSA MLPA Probemix P072-D1 MSH6-MUTYH sample pictures

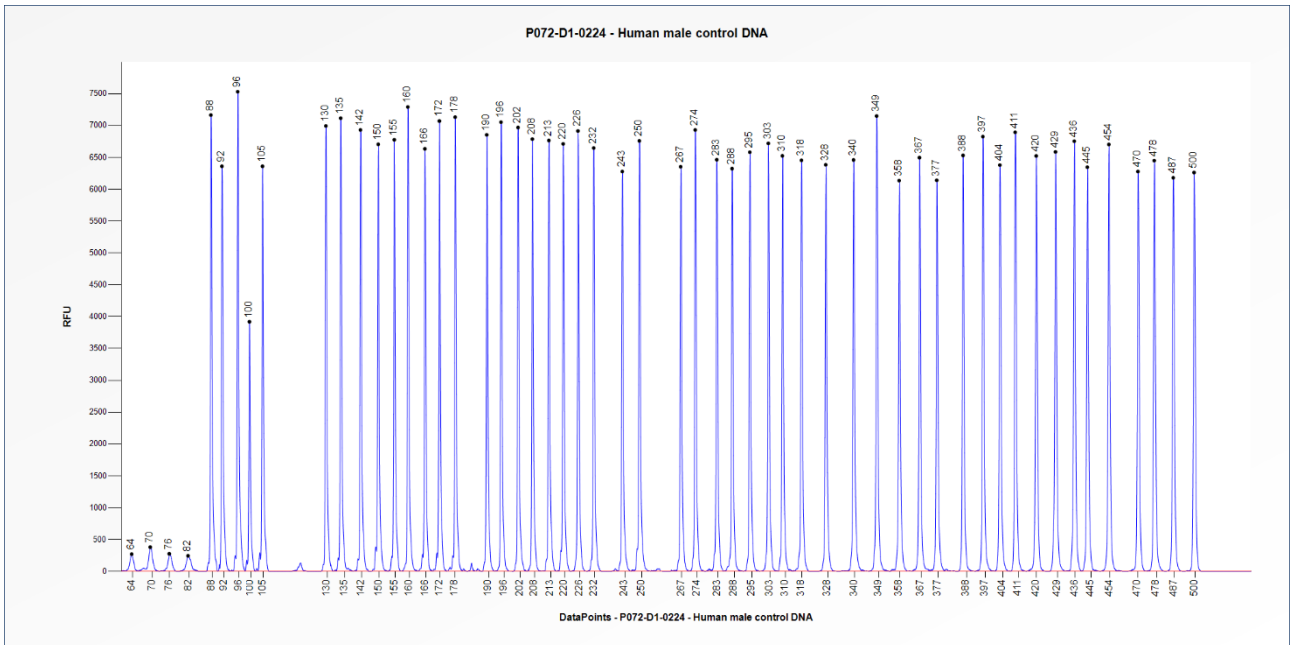


Figure 1. Capillary electrophoresis pattern from a sample of approximately 50 ng human male control DNA analysed with SALSA MLPA Probemix P072 MSH6-MUTYH (D1-0224).

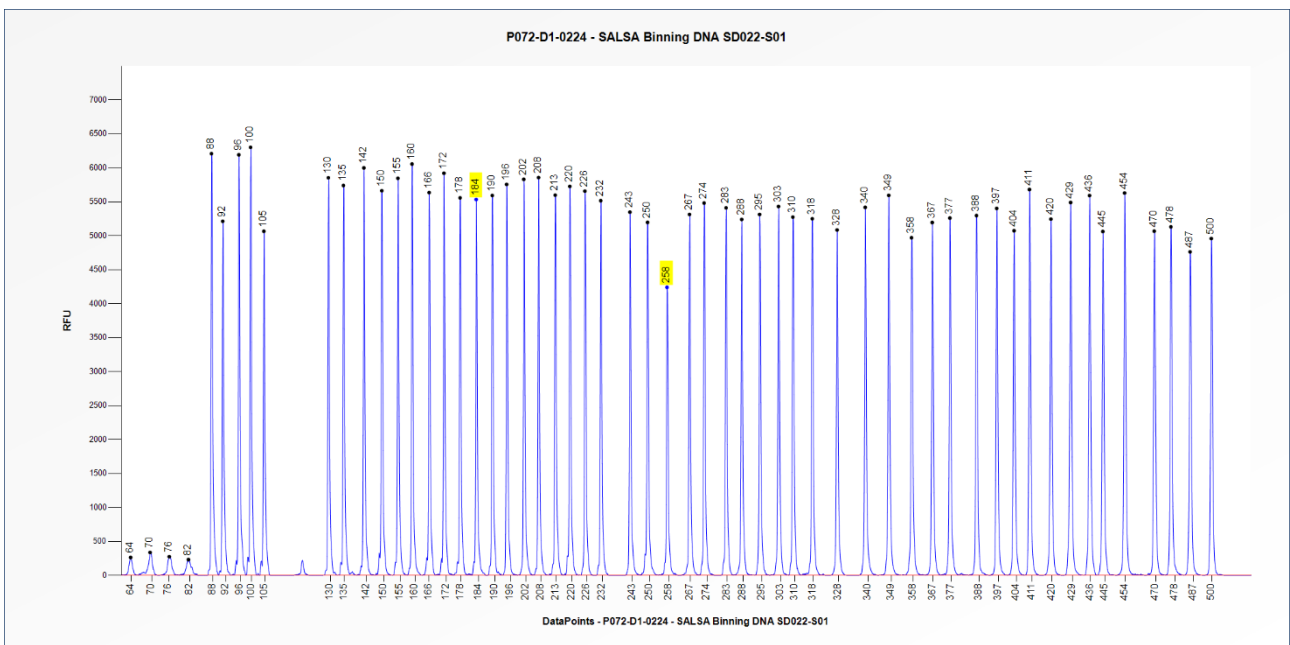


Figure 2. Capillary electrophoresis pattern from SALSA Binning DNA SD022-S01 (approximately 50 ng) analysed with SALSA MLPA Probemix P072 MSH6-MUTYH (D1-0224). The location of the *MUTYH* c.536A>G (p.Tyr179Cys) and c.1187G>A (p.Gly396Asp) mutation specific probes at 184 nt and 258 nt respectively, are indicated.

This lot was certified by MRC Holland on 14 May 2024.

This certificate is a declaration of analysis at the time of the manufacturing process. All assays were run in compliance with manufacturer's instructions for use.

Implemented changes in the COA
Version 02 – 09 December 2025 (06) - SALSA Binning DNA SD022 removed from section Purpose.
Version 01 – 14 May 2024 (06) - Not applicable, new document.