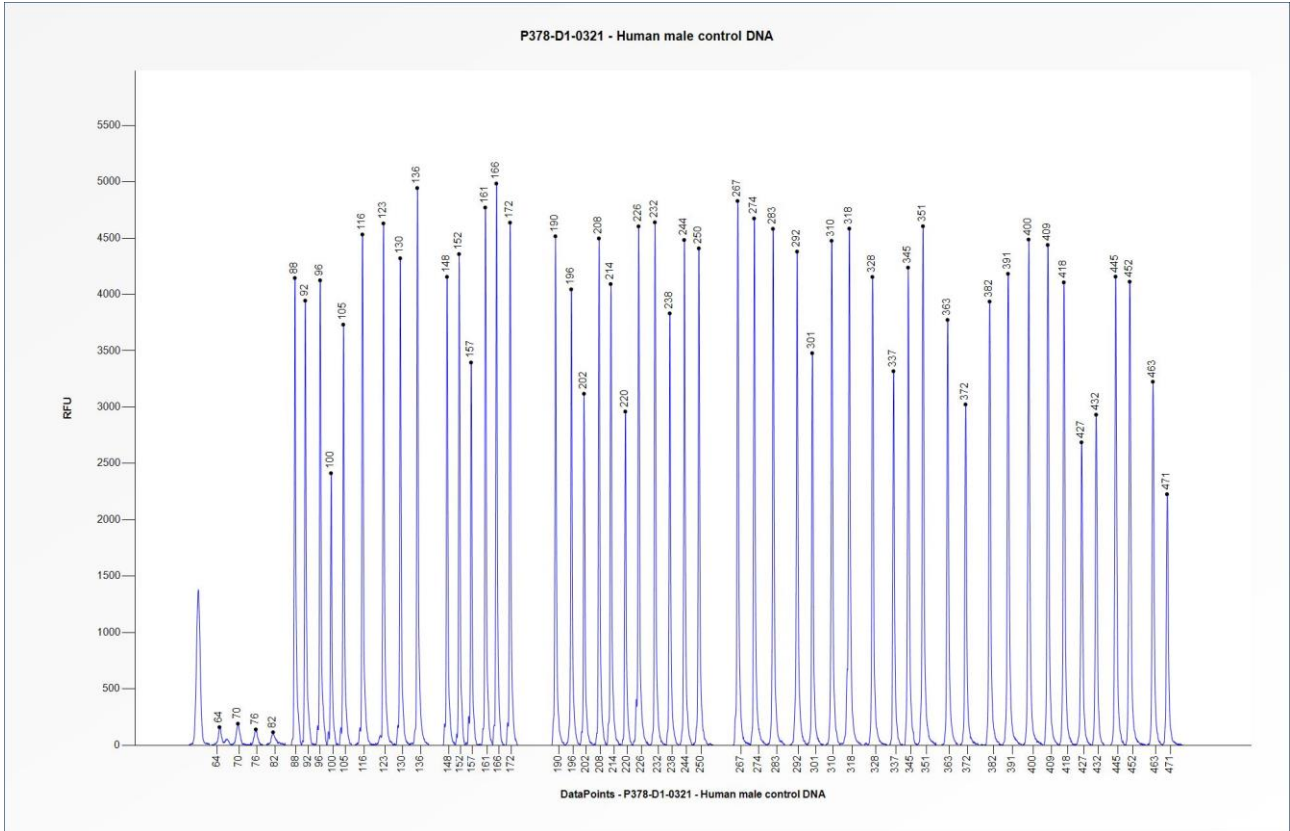


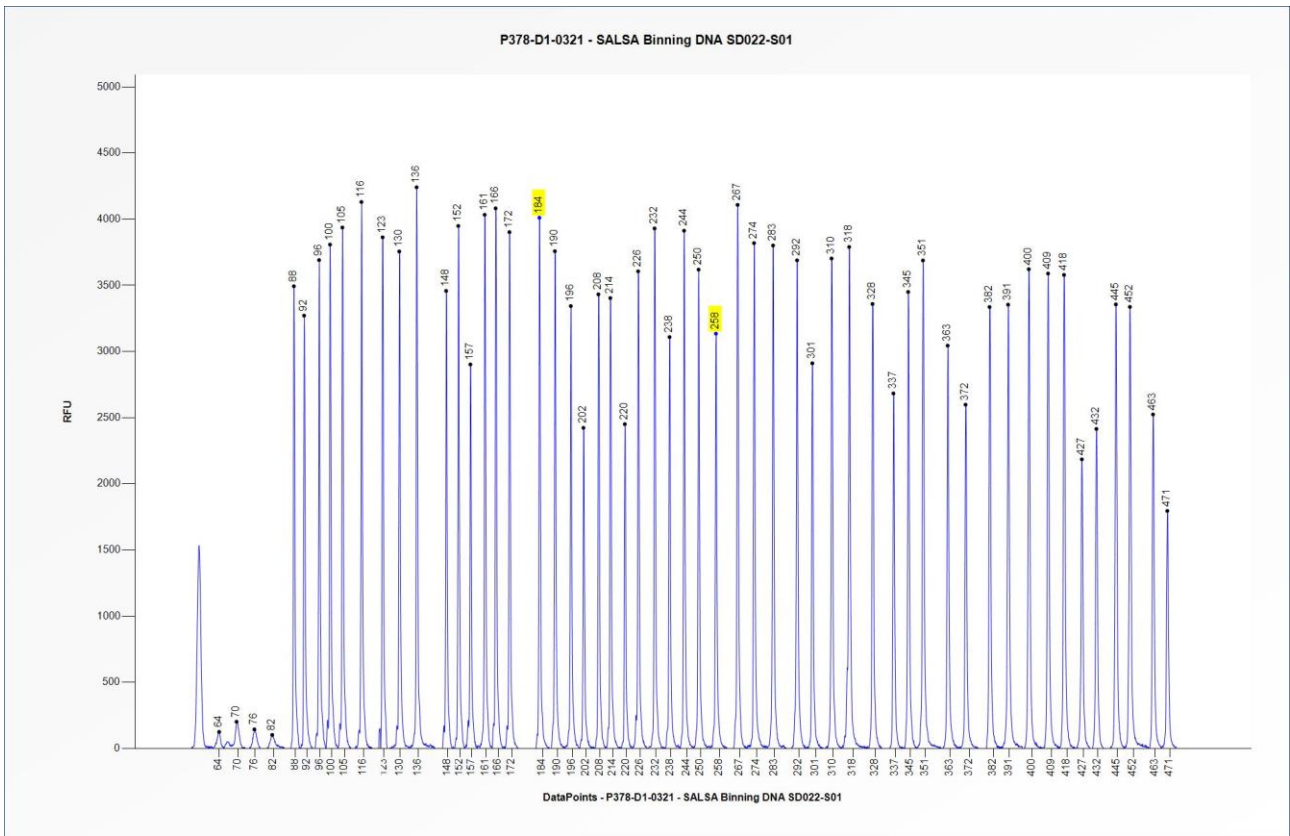


# Certificate of Analysis

## SALSA MLPA Probemix P378-D1 MUTYH sample pictures



**Figure 1.** Capillary electrophoresis pattern from a sample of approximately 50 ng human male control DNA analysed with SALSA MLPA Probemix P378 MUTYH (D1-0321).



**Figure 2.** Capillary electrophoresis pattern from SALSA Binning DNA SD022-S01 (approximately 50 ng) analysed with SALSA MLPA Probemix P378 MUTYH (D1-0321). The location of the *MUTYH* c.536A>G (p.Tyr179Cys) and c.1187G>A (p.Gly396Asp) mutation-specific probes at 184 nt and 258 nt, respectively, are indicated.

**This lot was certified by MRC Holland on 26 October 2021.**

This certificate is a declaration of analysis at the time of the manufacturing process. All assays were run in compliance with manufacturer’s instructions for use.

Implemented changes in the COA
Version 02 – 09 December 2025 (06) - SALSA Binning DNA SD022 removed from section Purpose.
Version 01– 26 October 2021 (06) - Not applicable, new document.