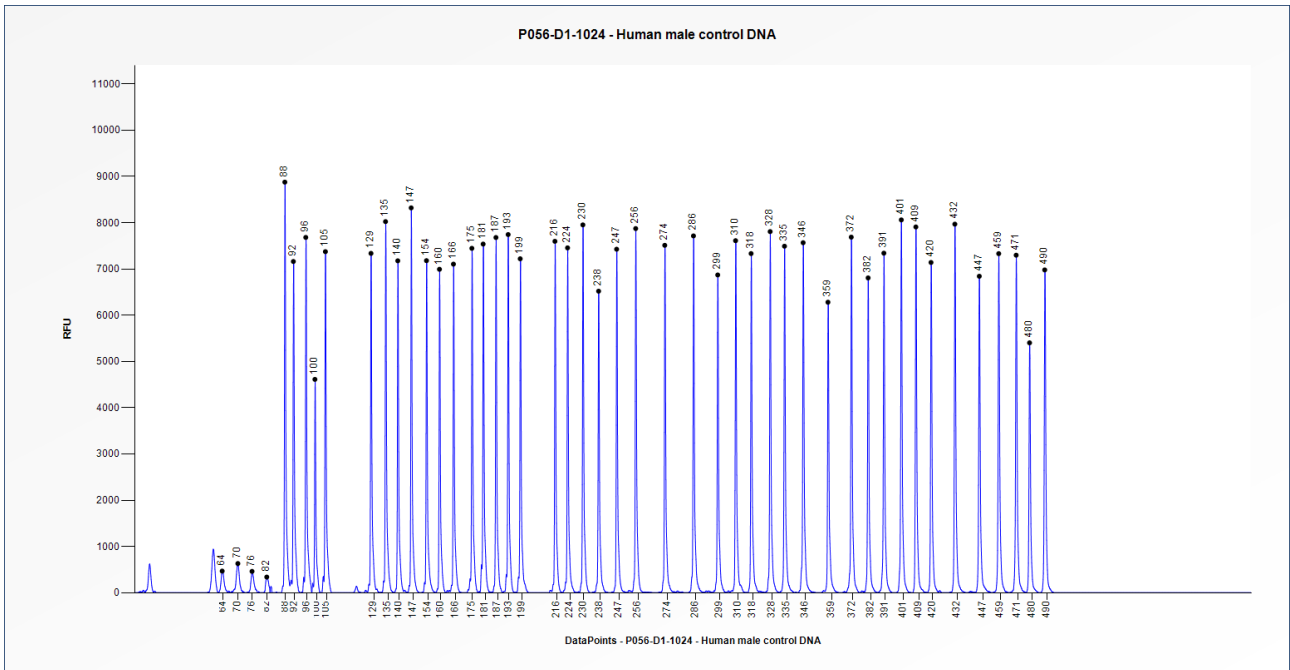


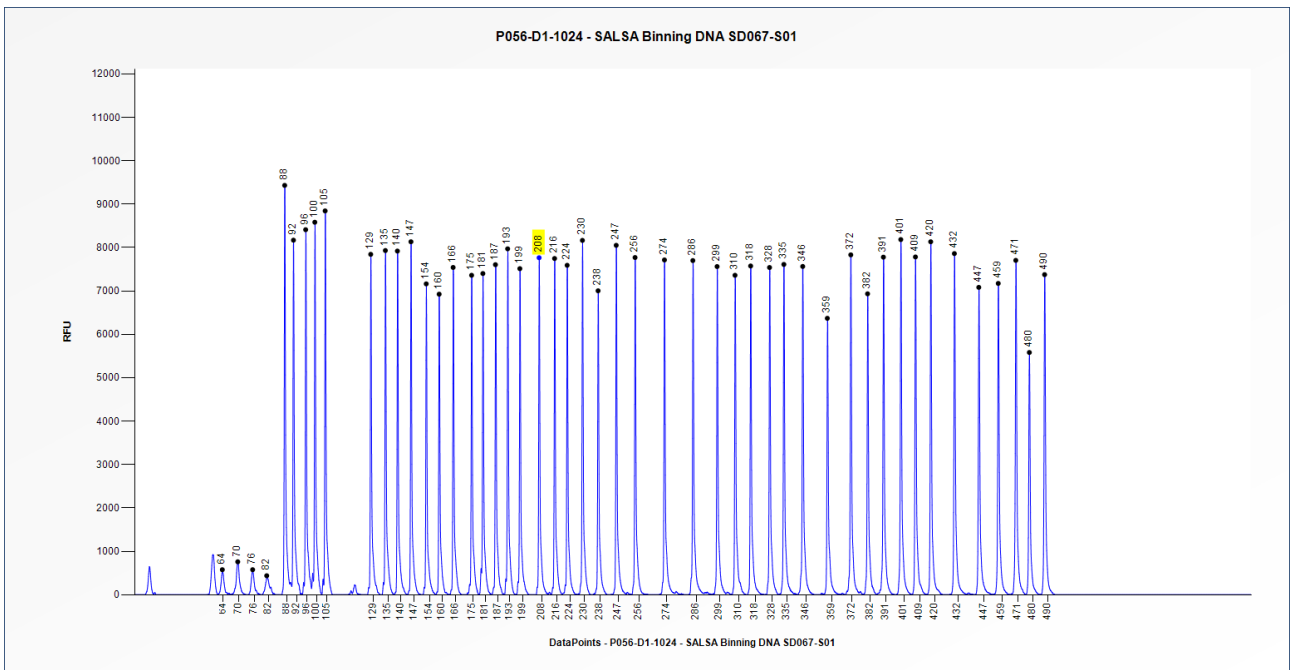


# Certificate of Analysis

## SALSA MLPA Probemix P056-D1 TP53 sample picture



**Figure 1.** Capillary electrophoresis pattern from a sample of approximately 50 ng human male control DNA analysed with SALSA MLPA Probemix P056 TP53 (D1-1024).



**Figure 2.** Capillary electrophoresis pattern from SALSA Binning DNA SD067-S01 (approximately 50 ng) analysed with SALSA MLPA Probemix P056 TP53 (D1-1024). The location of the *CHEK2* 1100delC mutation-specific probe at 208 nt is indicated.

**This lot was certified by MRC Holland on 16 January 2025.**

This certificate is a declaration of analysis at the time of the manufacturing process. All assays were run in compliance with manufacturer's instructions for use.

<b>Implemented changes in the COA</b>
Version 01 – 17 January 2025 (6) - Not applicable, new document.