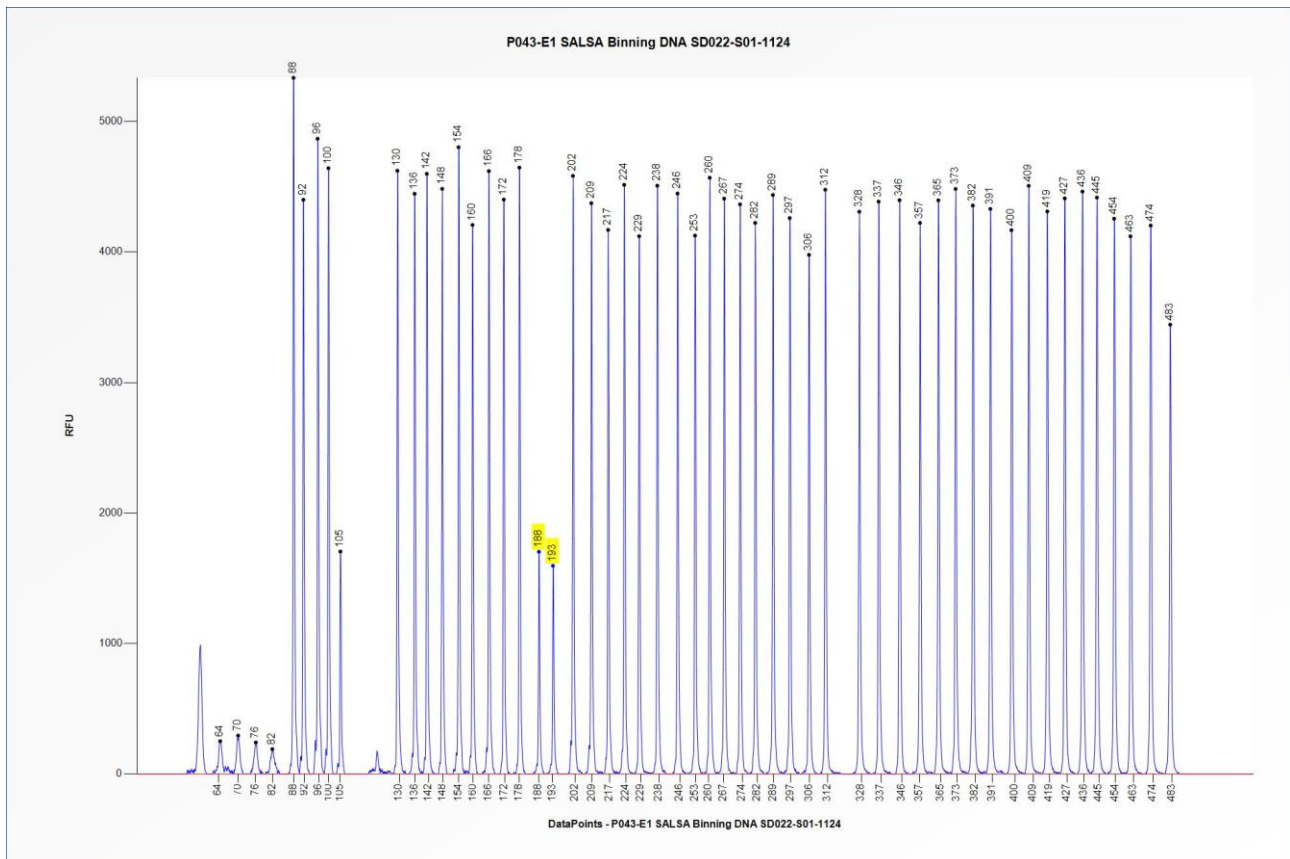


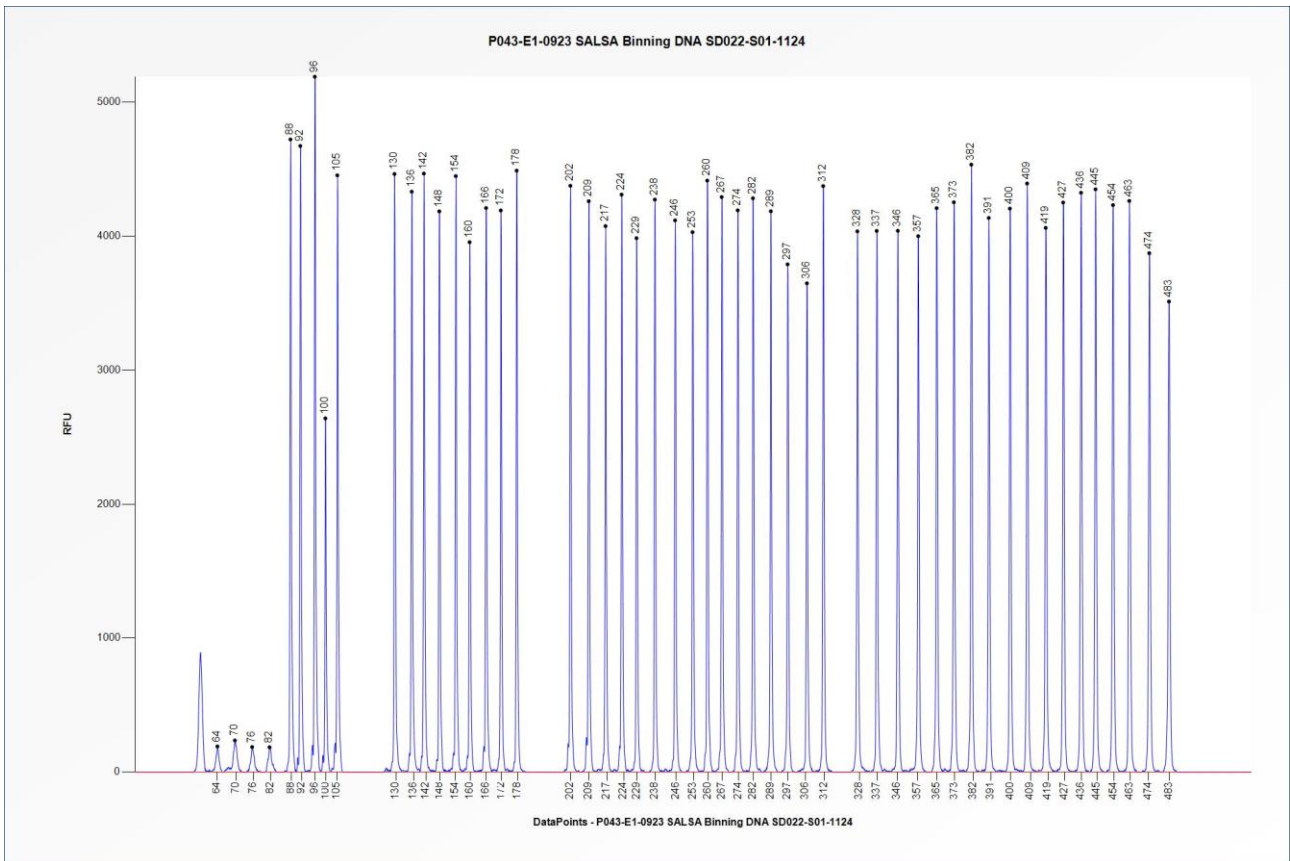


# Certificate of Analysis

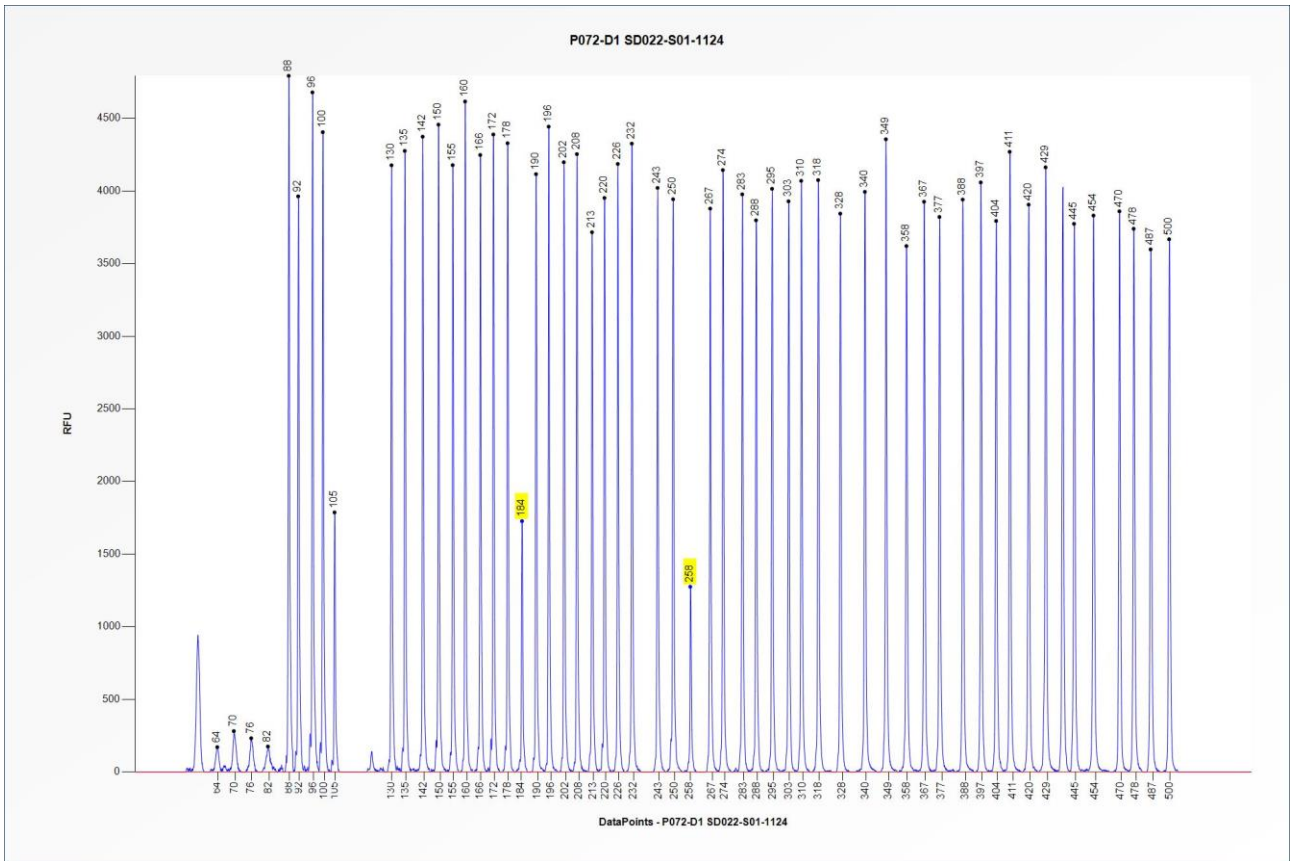
## SALSA® Binning DNA SD022 sample pictures



**Figure 1.** Capillary electrophoresis pattern from SALSA Binning DNA SD022-S01-1124 (approximately 50 ng) analysed with SALSA MLPA Probemix P043 APC (E1-0923). The locations of the *MUTYH* c.536A>G (p.Tyr179Cys) mutation-specific probe at 188 nt and the *MUTYH* c.1187G>A (p.Gly396Asp) mutation-specific probe at 193 nt are indicated. Probe peak heights may vary between different lots of the P043-E1 probemix.

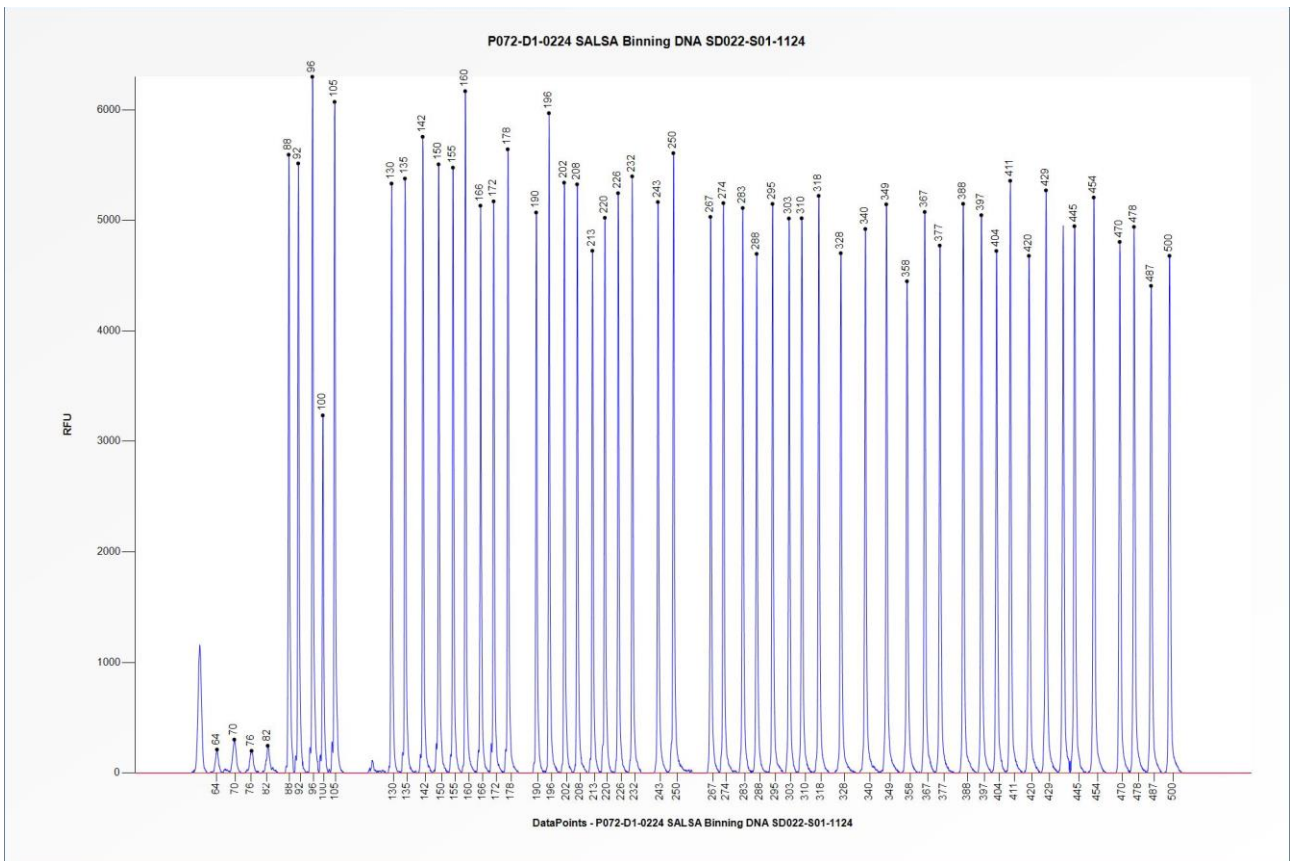


**Figure 2.** Capillary electrophoresis pattern from a sample of approximately 50 ng human male control DNA analysed with SALSA MLPA Probemix P043 APC (E1-0923). Probe peak heights may vary between different lots of the P043-E1 probemix.

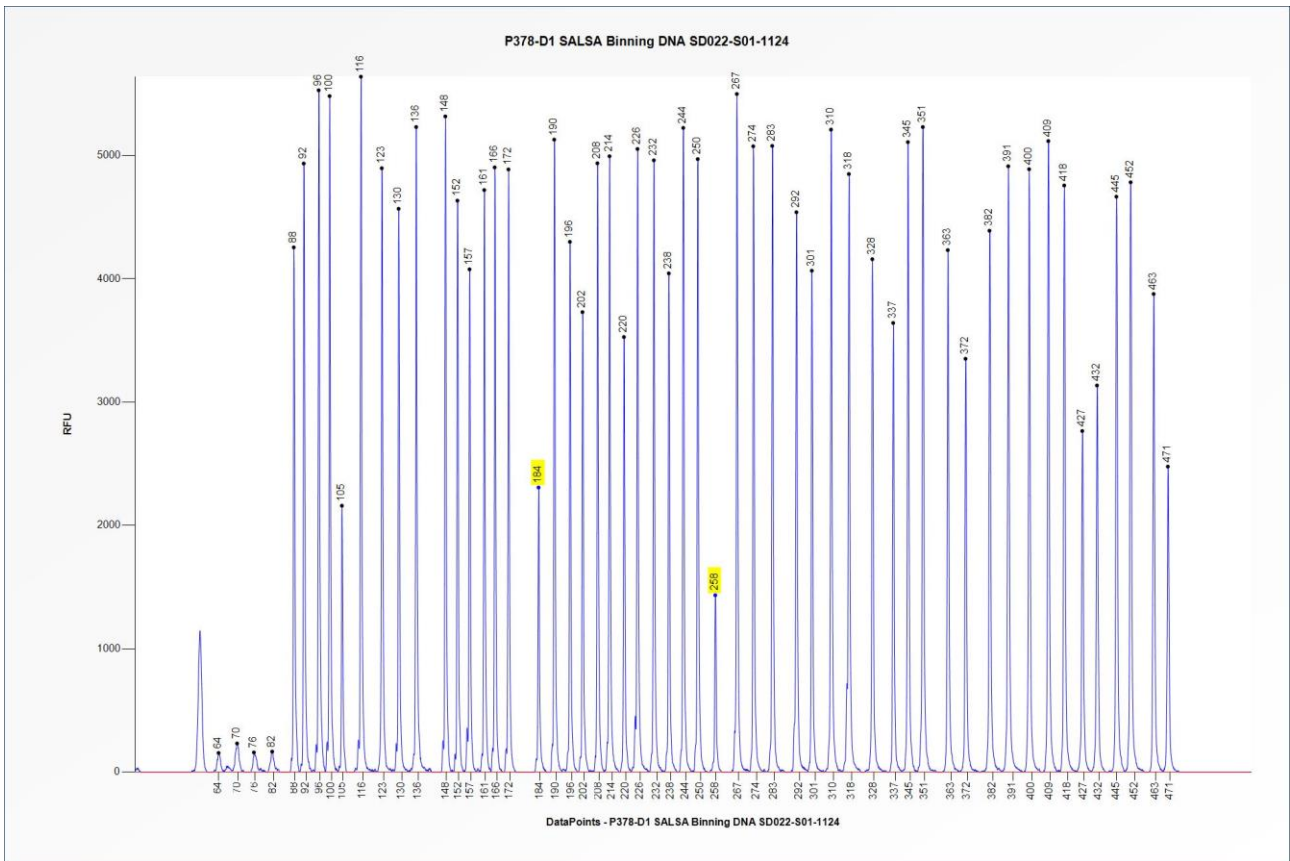


**Figure 3.** Capillary electrophoresis pattern from SALSA Binning DNA SD022-S01-1124 (approximately 50 ng) analysed with SALSA MLPA probemix P072 MSH6-MUTYH (D1-0224). The locations of the *MUTYH* c.536A>G

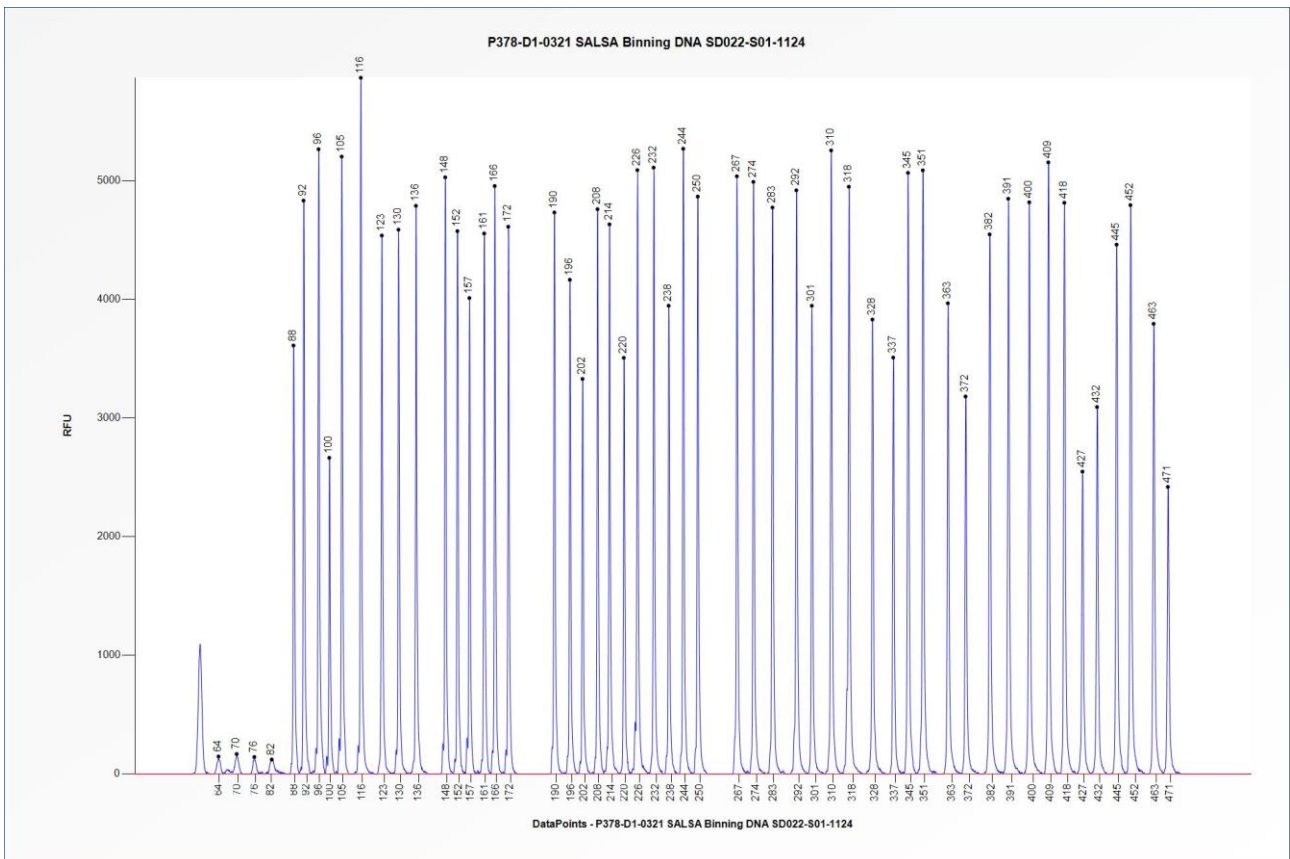
(p.Tyr179Cys) mutation-specific probe at 184 nt and the *MUTYH* c.1187G>A (p.Gly396Asp) mutation-specific probe at 258 nt are indicated. Probe peak heights may vary between different lots of the P072-D1 probemix.



**Figure 4.** Capillary electrophoresis pattern from a sample of approximately 50 ng human male wild-type genomic DNA analysed with SALSA MLPA probemix P072 MSH6-MUTYH (D1-0224). Probe peak heights may vary between different lots of the P072-D1 probemix.



**Figure 5.** Capillary electrophoresis pattern from SALSA Binning DNA SD022-S01-1124 (approximately 50 ng) analysed with SALSA MLPA probemix P378 MUTYH (D1-0321). The locations of the *MUTYH* c.536A>G (p.Tyr179Cys) mutation-specific probe at 184 nt and the *MUTYH* c.1187G>A (p.Gly396Asp) mutation-specific probe at 258 nt are indicated. Probe peak heights may vary between different lots of the P378-D1 probemix.



**Figure 6.** Capillary electrophoresis pattern from a sample of approximately 50 ng human male wild-type genomic DNA analysed with SALSA MLPA probemix P378 MUTYH (D1-0321). Probe peak heights may vary between different lots of the P378-D1 probemix.

**This lot was certified by MRC Holland on 04 December 2024.**

This certificate is a declaration of analysis at the time of the manufacturing process. All assays were run in compliance with manufacturer's instructions for use.

Implemented changes in the COA
Version 01 – 10 December 2024 (05) - Not applicable, new document.